


---

---

---

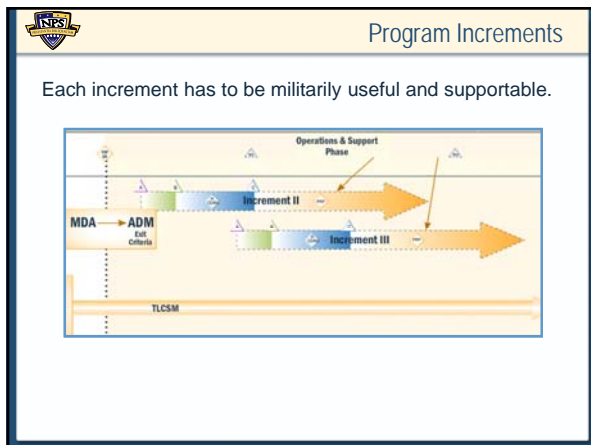
---

---

---

---

---




---

---

---

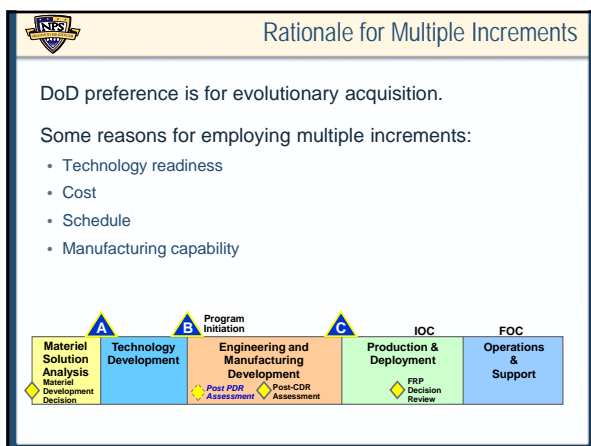
---

---

---

---

---




---

---

---

---

---

---

---

---



## Impact of Multiple Increments

Each increment will have its own:

- CDD
- CPD
- KPPs (threshold and objective values)
- Acquisition Plan Baseline
- Starting point

Acquisition Strategy should:

- Describe current increment
- Preview future increments
- Interoperability



"The acquisition fell through. The only thing I acquired was an ulcer."

---

---

---

---

---

---

---

---



## T&E and PIR

T&E activities

- Assess effectiveness and suitability
- No need to repeat T&E for increment attributes that are the same

PIR

- Means of getting feedback from Warfighters
- Depends on timing of increments



---

---

---

---

---

---

---

---