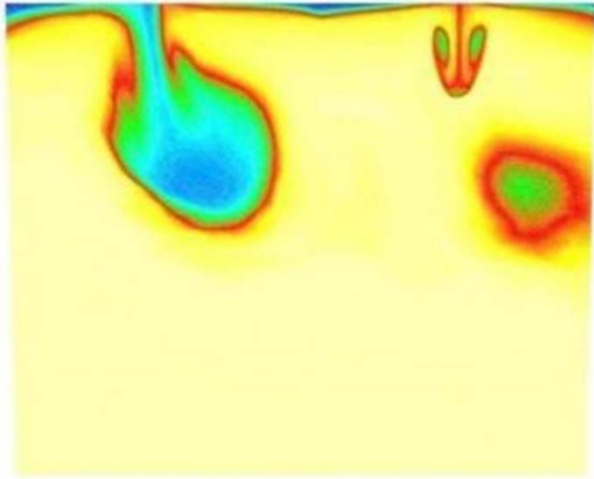


# Enhancement to Deep Oceanic Convection in the Arctic System

Co-PI: Peter C. Chu ([pcchu@nps.edu](mailto:pcchu@nps.edu)), Sponsor: NSF

1991-1993, Funding Level: \$198,094



## Brief Description

Investigating various mechanisms causing deep convections in the Arctic Ocean.

## NPS Theses

Li, Wei-Szu, "Using the C-vector method to derive the three dimensional circulation pattern near the east Greenland polar front," MS in Physical Oceanography , December 1992.

## Selected Publications

Cai, W.J., and P.C. Chu, 1997: Effects of convective instability due to incompatibility between ocean dynamics and surface forcing. *Annales Geophysicae*, **15**, 1,067-1,075 ([paper download](#)).

Chu, P.C., and J.C. Gascard (editors), 1991: [Deep Convection and Deep Water Formation in Oceans](#). Elsevier, New York, pp.382, ISBN 0-444-88764-4.