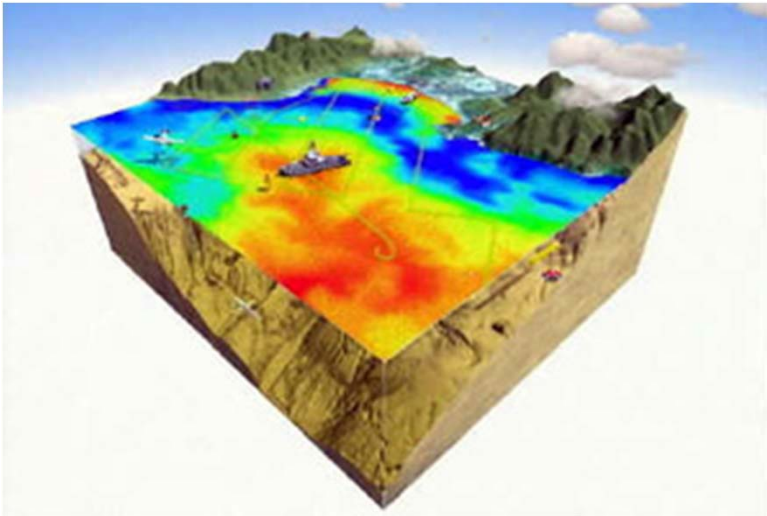


# Determination of Coastal Ocean Sampling Rate

PI: Peter C. Chu ([pcchu@nps.edu](mailto:pcchu@nps.edu)), Sponsor: CNMOC (Manager: William Burnett)  
2001-2002, Funding Level: \$35,000



## Brief Description

To determine coastal ocean sampling rate through analyzing spatial variability and calculating the decorrelation scales from observed and modeled data

## NPS Thesis

Obino, R., "[Simulation of the Bohai Sea circulation and thermohaline structure using COHERENS model](#)". MS in Physical Oceanography, June 2002

## Selected Publications

Chu, P.C., and G.H. Wang, 2003: Seasonal variability of thermohaline front in the central South China Sea. [Journal of Oceanography](#), Oceanographic Society of Japan, **59**, 65-78 ([paper download](#)).

Chu, P.C., G.H. Wang, and Y.C. Chen, 2002: Japan/East Sea (JES) circulation and thermohaline structure, Part 3, Autocorrelation Functions. [Journal of Physical Oceanography](#), **32**, 3596-3615 ([paper download](#)).

Wang, G.H., J.-L. Su, and P.C. Chu, 2003: Mesoscale eddies in the South China Sea observed with altimeter data. [Geophysical Research Letters](#), **30** (21), doi: 10.1029/2003GL018532 ([paper download](#)).